



# CHRISTINA<sup>®</sup> WATCHES

*Swiss Made*

## USER MANUAL - MODEL 503



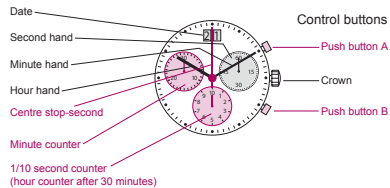
 **RONDA**  
CAL. 5040.B

## USER MANUAL - MODEL 503

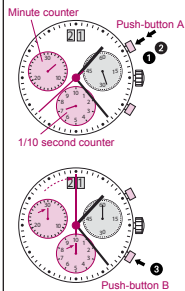
### 1 DISPLAY & CONTROL BUTTONS

#### Description of the display and control buttons

##### Display elements



### 2 CHRONOGRAPH: Basic function



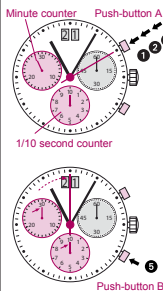
#### Chronograph: Basic function

(Start / Stop / Reset)

Example:

- 1 **Start:** Press push-button A
- 2 **Stop:** to stop the timing, press push-button A once more and read the three chronograph hands.  
4 min / 38 sec / 7/10 sec
- 3 **Zero positioning:** Press push-button B (The three chronograph hands will be reset to their zero positions).

### 3 CHRONOGRAPH: Accumulated timing

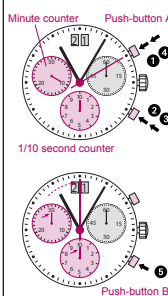


#### Chronograph: Accumulated timing

Example:

- 1 **Start:** (start timing)
- 2 **Stop:** (e.g. 15 min. 5 sec. following 1)
- 3 **Restart:** (timing is resumed)
- 4 **Stop:** (e.g. 13 min. 5 sec. following 3)  
= 28 min. 10 sec.  
(The accumulated measured time is shown)
- 5 **Reset:** The three chronograph hands are returned to their zero position

### 4 CHRONOGRAPH: Intermediate or interval timing



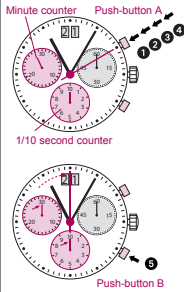
#### Chronograph: Intermediate or interval timing

Example:

- 1 **Start:** (start timing)
- 2 **Display interval:** e.g. 10 minutes 10 seconds (timing continues in the background)
- 3 **Marking up the measured time:** (the three chronograph hands are quickly advanced to the ongoing measured time)
- 4 **Stop:** (Final time is displayed)
- 5 **Reset:** The three chronograph hands are returned to their zero position

## USER MANUAL - MODEL 503

### 3 CHRONOGRAPH: Accumulated timing



**Chronograph:**

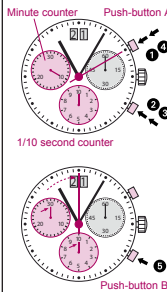
**Accumulated timing**

Example:

- 1 Start: (start timing)
- 2 Stop: (e.g. 15 min. 5 sec. following 1)
- 3 Restart: (timing is resumed)
- 4 Stop: (e.g. 13 min. 5 sec. following 3)  
= 28 min. 10 sec.  
(The accumulated measured time is shown)

- 5 Reset:  
The three chronograph hands are returned to their zero position

### 4 CHRONOGRAPH: Intermediate or interval timing



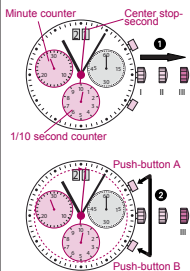
**Chronograph:**

**Intermediate or interval timing**

Example:

- 1 Start: (start timing)
- 2 Display interval:  
e.g. 10 minutes 10 seconds (timing continues in the background)
- 3 Marking up the measured time:  
(the three chronograph hands are quickly advanced to the ongoing measured time)
- 4 Stop: (Final time is displayed)
- 5 Reset: The three chronograph hands are returned to their zero position

### 5 Adjusting the chronograph hands to zero position



**Adjusting the chronograph hands to zero position**

Example:

One or several chronograph hands are not in their correct zero positions and have to be adjusted (e.g. following a battery change)

- 1 Pull out the crown to position III (all 3 chronograph hands are in their correct or incorrect zero position)
- 2 Keep push-buttons A and B depressed **simultaneously** for at least 2 seconds (the centre stop-second rotates by 360° → corrective mode is activated)



↓ **Adjusting the centre stop second**

Single step ↗ A 1 x short  
Continuous ↗ A long

↓ **Adjusting the next hand B**

↓ **Adjusting the 1/10 second counter hand (position 6h)**

Single step ↗ A 1 x short  
Continuous ↗ A long

↓ **Adjusting the next hand B**

↓ **Adjusting the minute counter hand (position 9h)**

Single step ↗ A 1 x short  
Continuous ↗ A long

- 3 Returning the crown to position I  
Termination of the chronograph hands adjustment (can be carried out at any time)